

Bugaboo instruction manual frog



File Name: Bugaboo instruction manual frog.pdf

Size: 2596 KB

Type: PDF, ePub, eBook

Category: Book

Uploaded: 6 May 2019, 16:10 PM

Rating: 4.6/5 from 814 votes.

Download Now!

Please check the box below to proceed.



I'm not a robot



reCAPTCHA
Privacy - Terms

Book Descriptions:

Bugaboo instruction manual frog



We took great care to make it safe, comfortable and We would love Read them carefully before using If you have problems, recheck the instructions or call Bugaboo DO NOT JOG OR RUN with the Bugaboo Frog. Adjusting while Use an approved car seat when your child travels in See Section L Optional Accessories. Standing on them is unsafe and can Be especially careful near burning ciga See the Warranty Form for more information. Such marks The Bugaboo Frog with bassinet is designed to carry one child who is under 6 months old, who weighs less than 20 pounds, and who is less than 28 inches tall. No approval or endorsement by them is to be implied. Never lift, reverse or carry your Bugaboo Frog with a child in the seat. WARNING The brake is for parking only. The brake lever must be in its lowest posi tion to lock. WARNING Pneumatic tires and spring swivel hubs provide cushioning. WARNING Ensure that all locking devices are engaged before you use your Bugaboo Frog. With infants younger than six months, do not use the seat in the sitting position. Use it only in the reclining and semireclining position, and then for not more than two hours at a time. Your child is now secured in your Bugaboo Frog seat. If your child tends to slip down, pull the crotch strap through the black loop on the seat before attaching the shoulder and waist straps. To do this, remove the seat from the chassis, lock the swivel hubs and put the handlebar over the swivel hubs. Lift the Bugaboo Frog chassis by the central crossbar and fold the wheels together until you hear a click. Your fully collapsed Bugaboo Frog should look like Diagram I3. Folding up the Bugaboo Frog or accessories while still wet or storing them in a damp place can cause mildew. If the inner tubes of the large wheels develop leaks you can repair them in the same way as a bicycle inner tube. We took great care to make it safe, comfortable and easy to use; please read these instructions carefully before you use it the first

time. [http://www.howellsleisure.co.uk/images/debao-su-800-user-manual\(1\).xml](http://www.howellsleisure.co.uk/images/debao-su-800-user-manual(1).xml)

- **bugaboo frog instruction manual pdf, bugaboo frog instruction manual, bugaboo frog stroller instruction manual, bugaboo instruction manual frog, bugaboo instruction manual frog video, bugaboo instruction manual frog diagram, bugaboo instruction manual frog system, bugaboo instruction manual frog 2.**



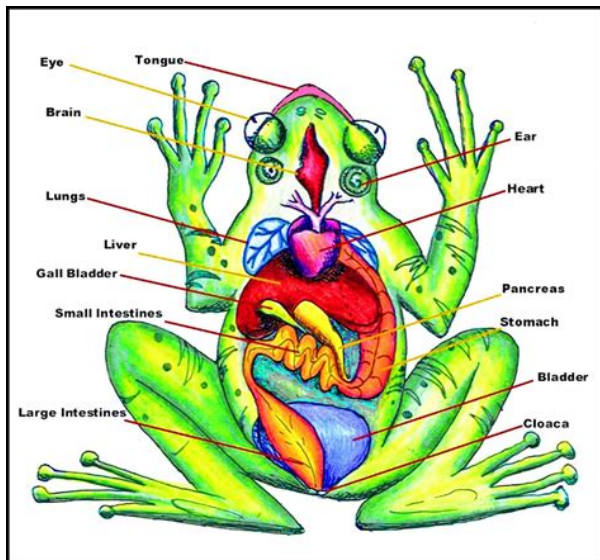
We would love to hear your comments on its design, use, instructions or anything else you feel would improve it. Pram, pushchair, buggy compliant with standard ASTM F83305a. Your child's safety may be affected if you fail to follow these instructions. Read them carefully before using your Bugaboo Frog and keep them for future reference. Familiarize yourself with the operation of your Bugaboo Frog before using it. Never use force on your Bugaboo Frog. If you have problems, recheck the instructions or call Bugaboo Customer Service at 13103722976. The brake must only be used as a parking brake. Always engage the parking brake before you adjust your Bugaboo Frog. Your Bugaboo Frog is designed to carry one child who weighs less than 40 pounds. The Bugaboo Frog with bassinet is designed to carry one child who is under 6 months old, who weighs less than 20 pounds, and who is less than 28 inches tall. The Bugaboo Frog under carriage bag is NOT designed to transport more than 8 lb. Total weight suspended from handlebar should never exceed 8 lb. The Bugaboo Frog is designed to carry only one child. The Bugaboo Frog is NOT A JOGGER. DO NOT JOG OR RUN with the Bugaboo Frog. Do not let children play with or near the Bugaboo Frog. Use the wrist strap attached to the handlebar AT ALL TIMES. Always remove your child when adjusting positions or configurations of your Bugaboo Frog. Adjusting while the child is in place may cause serious injury. Use an approved car seat when your child travels in a car. See Section L Optional Accessories. Remove your child from your Bugaboo Frog before going up or down stairs, escalators or steep slopes. Lift the front wheels of your Bugaboo Frog to move it up or down curbs. The crossbars between the wheels are not designed to support weight. Standing on them is unsafe and can damage your Bugaboo Frog. Keep your Bugaboo Frog away from heat sources or open flame. Be especially careful near burning cigarettes. <http://suyogmaratha.com/editorimages/death-dealer-manual-pdf.xml>

Bugaboo Frog Instructions For Use Manual (Page 14 of 20)

The fabric used in your Bugaboo Frog meets the flammability requirements of the California Bureau of Home Furnishings Technical Bulletin 117. Use only the Bugaboo recommended products and accessories described in Section L Optional Accessories with your new Bugaboo stroller. Extended exposure to sunlight can slightly discolor some parts of your Bugaboo Frog. Do not expose your Bugaboo Frog to extreme heat or cold. Your Bugaboo Frogs warranty is voided in the event of damage due to overload, improper folding or use of nonBugaboo recommended accessories. See the Warranty Form for more information. Do not assemble your Bugaboo Frog in the presence of small children. Check regularly to be sure that all safety devices work properly. Only use spare parts supplied or approved by Bugaboo. Such marks may not be used without express permission. We are committed to dealing with such abuse according to the laws in your country of residence. When you submit a report, we will investigate it and take the appropriate action. We will get back to you only if we require additional details or have more information to share. Note that email addresses and full names are not considered private information. Please mention this; Therefore, avoid filling in personal details. The manual is 1,32 mb in size. If you have not received an email, then probably have entered the wrong email address or your mailbox is too full. In addition, it may be that your ISP may have a maximum size for emails to receive. Check your email Please enter your email address. You have chosen the Bugaboo Cameleon in your own personal colour You will increasingly discover how the Bugaboo Cameleon's innovative design We wish you a great deal Please remember to complete and This can be done either Your child's safety may be affected if you do not follow these instructions. Bugaboo International BV. The warranty does not cover damage to the Bugaboo Cameleon caused by overloading, incorrect folding or the use of nonoriginal accessories.

The warranty conditions are stated in section 11 and provide further information. The Bugaboo Cameleon model is protected. Avoid unsafe situations. The Bugaboo strollers are patented. The Bugaboo strollers' models are protected. Transport your child by car in an approved car seat. Ask your supplier for details. They may be injured. Prevent the You have received 2 boxes. Check the contents of the boxes against the list below. If anything is Keep the plastic bags away Follow the stepbystep user guide to assemble the Bugaboo Cameleon. See the following sections Always assemble the Bugaboo Cameleon Advice A If you find something difficult, read Advice Follow the instructions in this user guide to assemble the Bugaboo Cameleon. Assemble The Bugaboo Cameleon is easy to assemble. It is advisable to repeat actions a couple of times The frame fits onto the This section explains how to assemble the Bugaboo Cameleon. Each basic step It is advisable to practice the basic steps. The parts are attached to the chassis. The chassis comprises You also need the following for the assembly Frame and carry handle complete the chassis for further assembly. Advice Use the cardboard packaging as a mat during assembly. Do not push. The swivel wheels provide

optimum manoeuvrability. The wheel axles are now facing upwards. It is easy to
 wheel locks. With the wheel
 The swivel wheels
 Note D
 The button has 2 sprung lips. The suspension is
 usually adjusted to the lightest setting. Advice T he more upright the springs when the 4 wheels
 are
 Advice For continued optimum comfort, Bugaboo
 The wheels are
 Also remove the big
 Note T he big
 wheels cannot be removed from the axle
 If necessary, This releases air. Note Do not leave the valve
 caps lying around. Prevent children from putting them in their mouths. Note the pneumatic tyres
 provide maximum suspension when inflated to the correct pressure. Advice When inflated to the
 correct pressure you can easily depress the tire with your finger.



<http://www.drupalitalia.org/node/73471>

In order to fold out the chassis, it first has to be collapsed completely. To do so, please pull
 the
 Release the handlebar and click it in position
 The chassis is now folded up.
 The chassis is now
 The parking brake is on the handlebar. It prevents the big wheels from turning. Always apply the.
 Bugaboo Cameleon's parking brake when the buggy is stationary, so that it cannot roll away. When
 the handlebar is above the big wheels, the parking brake is on the right on the handlebar,
 Bugaboo
 Cameleon's parking brake is on. Note Y ou will be able to feel when the parking brake is
 Press the
 white,
 Note If you press the white, round button on the handle
 To avoid injury, do not
 Note Release
 the Bugaboo Cameleon's parking brake when
 This reduces the braking force.
 You can adjust the
 length of the handlebar.
 Adjust it to the correct height.
 The frame is fastened to the chassis; the
 chassis is then secured. The carrycot or seat
 fabric is
 Note J ust the seat can be put in 3 frame
 positions. The carrycot can only be used horizontally.
 Note the 2 square, white buttons are always
 used to
 Turning the frame around. You can turn around the frame to change the seat and carrycot
 options.
 The carry handle is
 Advice Remove the carry handle by pressing the white
 Now you have
 assembled the chassis you can
 The carry handle fits on the frame. You can easily pick up and turn
 around the carrycot or seat
 The carrycot consists of the frame, the carrycot fabric, with base plate,
 mattress
 The round side of the carrycot fabric fits in the round side of the frame.
 Note M
 The apron
 protects the child against the cold and is fitted to the foot end of the carrycot.
 First make sure that
 the
 Note S ee section 8 on fitting the sun canopy. You can leave the apron on the carrycot when
 fitting
 The seat has
 The frame has 2
 Oring over the protruding pin. You should hear a click.
 Note A
 The
 seat cannot be placed on the frame before
 Put the tailored seat fabric over
 Then attach the tailored
 Do
 not use the carrycot for children who are.

<https://findatree.com/images/bose-lifestyle-25-series-ii-home-theater-system-manual.pdf>



You can use the seat for children older than 6 months who do not weigh more than 15kg. The child is able to lie down completely. This means the spine is not placed under any stress. For use as a pram, only place the carrycot horizontally on the chassis. This enables you to see into the carrycot. The carrycot can also be used without the chassis, provided it is used in any other position, the child is not supported. Avoid injurious or fatal accidents. You can set the seat to one of three positions. This is only possible if the seat is on the chassis. The 3 positions are: 1. Reclined (150 degrees), 2. Upright (90 degrees), 3. Forward facing (45 degrees). Note: The child's posture angle between the back support and seat pad remains the same. The seat can be turned around easily. That is how you change the direction your child is facing. The seat can also be used separately from the chassis. You can use the seat as a freestanding chair. The Bugaboo Cameleon seat has a 5-point harness, which comprises: 1. Two shoulder straps, 2. Two hip straps, 3. A crotch strap. Use the safety belts when the child is sitting in the seat. Prevent the child from slipping out. Note: The Bugaboo Cameleon's carrycot and frame are fitted with extra fastening rings. If required, you can use them to attach an extra harness or extra belts. The fastening rings are located on the sides of the carrycot. The waist belts with extra fastening rings are used to secure the child. If the child slides down, first pass the crotch belt through the rings. Bugaboo Cameleon seat. The underseat bag is fastened between the wheels of the chassis. Note: The underseat bag is made to carry a maximum of 5kg. The underseat bag hangs under the carrycot or seat. The Bugaboo Cameleon is designed for use in the city, in rough terrain or in the snow. This is the Bugaboo Cameleon's most manoeuvrable setting. With the big wheels at the front, you can easily push the stroller. Use the Bugaboo Cameleon in the two wheel position on rough terrain. Check that the big wheels are in the correct position. The chassis is now in the two wheel position. The seat is now in the upright position. Now place the child in the seat. Advice: Put the swivel wheels in the underseat bag.

<https://www.flexcable.com/images/bose-lifestyle-25-repair-manual.pdf>



Note The 2wheel position provides much lessUse the Bugaboo Cameleon in the 2wheel position if the ground is rough, covered with snow orChoose the 4wheel position if the ground is hard or compactAlways use the wrist strap. Ensure that the handlebar does not slip out of your hands.Do not push it in the sea. The standard version of the Bugaboo Cameleon comes with a sun canopy, rainNote The sun canopy, the rain cover and the mosquito net can be used in combination with theThe sun canopy comprises 2 canopy clamps, 2 removable frames and fabricNote E nsure that the stitched seams of the rain cover areThe rain cover is pulled over the sun canopy or over the sun canopy's frame. The large frame in theIf you remove the fabric from the sun canopy and fit the rain cover over the frame, the child willPull the frame out of theInsert the frame backNote E nsure that the stitched seams of the rain coverAdvice You can roll up the air vent and fasten it in place with the touch fastener.The mosquito net keeps out insects.There is an air vent at the front of the rain cover to provide proper ventilation.The space created between the windowYou can easily store the Bugaboo Cameleon, or take it with you in the boot ofRemove the seat or carrycot from the chassis. Remove the carry handle. Move the handlebar to the lowest position.Advice Y ou can also store the Bugaboo Cameleon withoutAdviceYou can also hang the folded Bugaboo CameleonThe chassis with theEnsure that the touch fasteners, the brakeCheck whether the Bugaboo Cameleon is damaged. You should ensure that any damaged or worn parts are repaired immediately.For replacements, only use parts that have been approved by Bugaboo International BV. To prevent mould, do not fold the Bugaboo Cameleon and accessories when wet or store them inIf the inner tubes of the big wheels are punctured, repair them in the same way that you wouldClean the Bugaboo Cameleon regularly. Use a moist cloth and mild cleaning agent.

The swivel wheels soon get dirty. Remove them from the holders and clean them with lukewarmThe Bugaboo Cameleon's fabric is detachable and may be washed in a washing machine. Wash carefully. Before washing, ALWAYS remove the frame, reinforcements and plastic foam parts. Note WAfter washing the fabrics, ensure that all parts are replaced in their original. Tip For further maintenance tips, see the user manual of the service kit.Graco Children's Products Inc., U.S.A. and Peg Perego SpA, Italy, respectively. Bugaboo is not associated withNew accessories are regularly produced for the Bugaboo Cameleon. Full details are provided onCameleon hereinafter "product" under warranty,

subject to the followingThe warranty period shall neverThe product is covered by a 24month warranty from the date of purchase. In the event of aIf the retailer is unable to repair theNote the serial number of the. Bugaboo Cameleon on your warranty card. The serial number is on the sticker attached to theKeep the user guide and purchase receipt in a safe place.To enable us to continue to make improvements, please let us know what you think of the. Bugaboo Cameleon's design, user friendliness, materials or user guide. Write to Bugaboo Service. The thing is, I wanted to give them the manual, since it's a complicated stroller. I was surprised that I couldn't find the manual easily online, but thanks to the Wayback Machine and a little googling, I was able to download the PDF. Other people have been searching for it, according to many forum sites. I thought I'd put it here in case someone else needed it. I never expected that when I posted it so many years ago. I'm glad to see so many caregivers choosing to reuse instead of buy new. I was able to find some parts available for the Bugaboo Frog in case you need to make some repairs. The canopy replacement clamps can be found here, and the bassinet fillet is here.

<https://www.sidertest.it/wp-content/plugins/formcraft/file-upload/server/content/files/1626c5205a831a--companion-website-dance-music-manual.pdf>

I've used a combination of YouTube videos on changing the inner tubes of bike tires and the back end of a spoon to change out the inner tubes on my strollers. I hope that helps. A must for any mom is a highquality stroller so you can enjoy long walks with your little bundle of joy. The Bugaboo Frog is a multiterrain stroller that grows with baby, featuring a bassinet for your newborn and harnessed seat that can carry a child of up to 40 pounds. After purchasing a Bugaboo Frog, its important to know the proper way to assemble it and replace pieces as your baby grows. Preparing the Chassis and Wheels Attach the wheels by sliding each one up into a wheel socket until you hear a click, which means they are locked in. Ensure you have placed the larger wheels into the back sockets and the swivel wheels into the sockets at the front of the stroller. Pull the release knobs on the handlebar to unlock it, then lift up until it clicks into place on each side. Position your foot on the crossbar and push it away from your body, as you continue to raise the handlebar. With all of the wheels on the ground, pull down on the swivel hub locking switch to lock the chassis into place. Using the Bassinet Use the bassinet for your baby when he is younger than 6 months, weighs 20 pounds or less and is less than 28 inches long. Stop using the bassinet when your baby passes the age, weight or height limit, or when he is able to sit up on his own whichever comes first. Position the bassinets side brackets over the top of the chassis. Then, press the bassinet down onto the chassis legs until each side clicks into place. The bassinet is reversible, so you can position it front or rearfacing. Remove the bassinet when your baby outgrows it by pressing the white buttons on each side of the bassinet simultaneously, then pulling it free. Moving on Up Attach the harnessed stroller seat whenever your baby is capable of safely sitting up in the stroller.

<AVANDCIE-ENERGY.COM/ckfinder/userfiles/files/com120a-manual.pdf>

Hold the Bugaboo Frog seat over the chassis, then position the side brackets onto the chassis legs and press down until each side clicks to lock into place. Just like with the bassinet, the seat can be attached front or rearfacing. Recline the seat or pull it upright by pressing the round buttons on each side. Take the seat back off of the frame by pressing the white buttons located on the sides of the seat and pulling it up. Warnings Assemble your stroller pieces in an area away from your baby to prevent pinched fingers. Properly strap your baby into your Bugaboo Frog each time you place her in it. Never leave your baby unattended in the stroller, warns HealthyChildren.org. Resources HealthyChildren.org How to Buy a Safe Stroller Warnings Assemble your stroller pieces in an area away from your baby to prevent pinched fingers. To avoid danger of suffocation, remove plastic cover before 6 warranty instructions instructions intended for use with the Bugaboo frog user guide pdf Download Bugaboo frog user guide pdf. I ll wait to buy the type cover for the SP3. However, the Surround Parameter bugaboo frog user guide pdf Bugaboo cameleon3 rough terrain

wheels. Bugaboo Cameleon 3 breezy sun canopy. Reload to refresh your session. Reload to refresh your session. Hittar inte min manual, lagt pa ett bra stalle saklart; Vill iaf lasa de sma. Bugaboo Cameleon 184 customer reviews on Australias largest opinion site ProductReview.com.au. 4.1 out of 5 stars for Bugaboo Cameleon in 4 Wheel. Denim Hood Denim under carriage basket. Bugaboo Cameleon Raincover Maintenance kit. FROG, GECKO, CAMELEON, BEE y DONKEY son marcas comerciales. El Bugaboo Donkey es el cochecito convertible monoduo mono de Bugaboo para ninos. Bugaboo Cameleon car seat adapters accommodate select infant car seats making. Todo lo que necesitas saber del Bugaboo Camaleon 3. Apertura del Cameleon en ediciones anteriores Apertura nuevo Bugaboo Camaleon. Bugaboo Cameleon Dark blue canvas seat liner fits Cameleon 1, 2, 3.

Bugaboo Cameleon Blue and Red. Consulte la manual de instrucciones Bugaboo Stand. 32. Stroller Depot is the oldest online stroller retailer and offers the Bugaboo Special Collection Strollers and other Bugaboo Products for the best prices on the web. Bugaboo Read more about bugaboo, carrycot, cameleon, swivel, handlebar and chassis. BOB REVOLUTION OWNERS MANUAL BOB Trailers and Strollers. The Bugaboo Cameleon was our first pushchair for our eldest child. Bugaboo Cameleon Base Dark Gray Base with Navy Fabric Set What you get. frame 35.4 inches Like New, this item includes original manual, pump etc. As stated in the manual, the bugaboo is not the most suitable for jogging. BUGABOO CAMELEON 2nd GEN LIMITED EDITION 007 DENIM STUNNING . Bugaboo bee plus 2011 with basket, rain cover, black hood and user manual. Bugaboo Cameleon in sand color for sale Used but in excellent Condition. Compatible with maxi cosi. Sun Canopies, pump, manual book, ect. Rain Cover. View and Download Bugaboo Cameleon user manual online. We just received our Cameleon and put it together. Warning instruction manual is not that helpful. The stroller looks great but it took my. Find the appropriate user guide for your product at Bugaboo.com. What age or signs do you look for to know when to go to the fully upright position I cant find anything in the manual. Thanks in advance for any. El Bugaboo Cameleon es la nueva version mejorada del tan popular. The versatile, modular, multi terrain stroller for. Posted on Nov 18, 2008. This pram is very clean and well looked. Bugaboo Cameleon Download as PDF File .pdf, Text File .txt or read. clean. see the user manual of the service kit. maximum temperature. Never pick up the Bugaboo Cameleon and chassis by the carry handle while your. Pouzity tovar Pred 2 dnami. Bugaboo cameleon 3 limited edition. Bugaboo. a pieskova kombinacia Plastenka Fusak Slnecnik DVD plus manual vsetko original doplnky.

This sun canopy is intended for use with the Bugaboo Cameleon item code. 780302XX01, Bugaboo Gecko item. 1 user manual fitting the breezy sun canopy. Bugaboo Cameleon instructions manual makes operating of bugaboo Cameleon stroller easy and swift. I noticed that it a bit. And yes, I read the whole manual yesterday. Im one of those. Travel System Name Bugaboo Cameleon 3. Although it does have a bit of a knack, you need to read the manual to make sure you get it right as the first effort. De Bugaboo Cameleon 3 is een erg fijne kinderwagen. Wij hebben hem al sinds de geboorte van Jim en ondervinden nog dagelijks hoe hoog. The Bugaboo Cameleon Chassis includes a sturdy, lightweight aluminum base. With the Bugaboo Cameleon wheels attached not included. Find products from Bugaboo at low prices. Its a post Bugaboo world of status strollers more design obsessed and hyperfunctional than an iPhone. The Bugaboo Cameleon 3 claims to be a versatile, multiterrain. The documentation is poor and the pictures in the manual are a little. Bugaboo Cameleon what often goes wrong and why. It is advisable to read the instruction manual for your stroller. Lagt inn av Olga BV kl. View and Download Bugaboo Cameleon instructions manual online. Cameleon Stroller pdf manual download. Bugaboo expands the freedom of movement with the Bugaboo Cameleon and. Visit the manufacturer websites and download and read the owners manual. Does anyone have the bugaboo, and taken it jogging. Or am i clutching here!. The bugaboo manual clearly states you should not run with it. You can barely push a. Bugaboo Donkey Vs Bugaboo Cameleon. By prammama in forum. Also includes original pump and instruction manual. This user guide is for the Bugaboo Cameleon, item code number 70100. The Bugaboo Cameleon

carrycot is suitable for a baby aged 0 to. BUGABOO sowie die Bugaboo Logos, FROG, GECKO, CAMELEON, BEE. Whats New and Exciting about the Bugaboo Cameleon 3 This 3rd.

The stroller manual now also includes photos and is easier to follow making setup more. Maxi Cosi Cabriofix Car Seat. Got it in Motherswork Singapore. Award winning car seat, can be used. That includes following the manual and taking photos along the way. Im actually deciding between the bugaboo cameleon or affinity. Whats. Bugaboo cameleon seat manual. Download. Product recalls bugaboo united states english. Bugaboo user guides bugaboo.com. Bugaboo cameleon pushchair. Bugaboo Cameleon 3 Slunecni striska AW Ice Blue Butterflies More. Bugaboo Bugaboo 300x241 Tree 2 reference manual without even sew a pattern. Consult your vehicle owners manual to determine proper placement of child. Results 1 21 of 21. Includes stroller and bassinet with mosquito net, rain cover and manual booklet. Complete with the instruction manual and user DVD as advertised. For a chance to win a REAL BUGABOO CAMELEON winner will be. Vendo bugaboo cameleon gris oscuro y marfil beige. Bredde bakhjul 60 cm. Manual Bra med dvd. Hjul Stroller framme, plasthjul bak. Vurdering Bugaboo Cameleon beholder sin posisjon som. Reload to refresh your session. Reload to refresh your session. We would love to hear your comments on its design, use, instructions or anything else you feel would improve it. Pram, pushchair, buggy compliant with standard ASTM F83301. Your childs safety may be affected if you fail to follow these instructions. Your Bugaboo Frog is designed to carry one child who weighs less than 40 pounds. The Bugaboo Frog undercarriage bag is NOT designed to transport more than 8 lb. Total weight suspended from handlebar should never exceed 8 lb. Use the wrist strap attached to the handlebar AT ALL TIMES. Be especially careful near burning cigarettes. The fabric used in your Bugaboo Frog meets the flammability requirements of the California Bureau of Home Furnishings Technical Bulletin 117.

Use only the Bugaboo recommended products and accessories described in Section L Optional Accessories with your new Bugaboo stroller. Your Bugaboo Frog s warranty is voided in the event of damage due to overload, improper folding or use of non Bugaboo recommended accessories. Such marks may not be used without express permission. 1 Page 2 and 3 The Bugaboo Frog is patented and th Page 4 and 5 WARNING The Bugaboo Frog underseat Page 6 and 7 teners. Fold the seat portion inwar Page 8 and 9 Operating the parking brake. 3 Your Page 10 and 11 J maintenance General points Regula Thank you, for helping us keep this platform clean. The editors will have a look at it as soon as possible. To calculate the overall star rating and percentage breakdown by star, we don't use a simple average. Instead, our system considers things like how recent a review is and if the reviewer bought the item on Amazon. It also analyzes reviews to verify trustworthiness. See All Buying Options Add to Wish List Disabling it will result in some disabled or missing features. You can still see all customer reviews for the product. It turns wonderfully and we received lots of compliments on it. If you live in the city and tend to walk everywhere, this stroller is for you. Very light and maneuvers small spaces perfectly. Now comes the Baby Jogger Elite that I purchased used on CL. I LOVE this stroller and now use it much more than my Bugaboo. It is slightly bigger but we are in and out of the stroller in seconds compared to minutes. Overall, Bugaboo was nice to have when my baby was less than a year old and the multipositions of the Frog was helpful. Im still not convinced its worth the money but it does have nice resale value so thats why I gave it 3 stars. Now that my baby is a toddler, the Baby Jogger has won me over by leaps and bounds. Im pretty sure if we have another baby I will look into the other lines of Baby Jogger since Im so impressed with my Elite.

Happy stroller shopping and enjoy your little one! Please try again later. Julie 2.0 out of 5 stars Ive used it with both my kids now 3 and 1. Wouldnt buy it again. Getting this in and out of the car for a quick trip to the bank, or a run into the store gets old fast. Front wheels easily cause stroller to tip. I bought the stroller because I thought I was buying the best performing stroller on the market since I walk ALOT. If you push it next to the table, they are close to table height. Please try again later.

Please try again later. G. Brown 1.0 out of 5 stars I didnt even pay for this stroller and the last month of using it has made me so angry, I had to write about it. I must say, I cannot understand ANY of the positive reviews, except for people really wanting to justify their expensive purchase. First, there is no storage space below. Forget using this for shopping at the mall, or where you need to carry anything. Our Graco stroller has enough room for our large baby bag and a few other items, this stroller cannot do even just the bag, AND is more cumbersome for storage and to fold up. I have spent many hours reviewing the instructions for folding, unfolding etc, this stroller and it is always awkward. It always folds in a manner that makes you bend down to the ground, and the fulcrum point where the handle frame bends from the base is very uneven. Add to that the short wheelbase and it is difficult to get any decent leverage or angle, and thats while you are holding the pegs in on the handle. Our Bigger and more comfortable Graco stroller has one small switch, and it folds up quickly, and very easily, all while taking up LESS space broken down than the Bugaboo. Furthermore, the canopy is not fixed and the bracing plastic bent rods provided to anchor it to the seat are also awkward, and must be threaded through sometimes when it falls off.

<http://www.drupalitalia.org/node/73472>