

Craig projection alarm clock radio manual

EAAC500

 **ELECTROHOME**

WakeUp™ AM/FM SelfSet™ Projection Clock Radio
with Dual Alarm

Radio-réveil WakeUp™ AM/FM à projection
avec SelfSet™ et double alarme

USER MANUAL
GUIDE DE L'UTILISATEUR



Thank you for your purchase of this Electrohome product. Please read this instruction manual carefully before using product to ensure proper use. Keep this manual in a safe place for future reference.
Merci d'avoir fait l'achat de cet appareil Electrohome. Veuillez lire le présent guide attentivement avant de faire fonctionner l'appareil pour vous assurer de l'utiliser correctement. Conservez le présent guide dans un endroit sûr afin de pouvoir vous y référer au besoin.

www.electrohome.ca

File Name: Craig projection alarm clock radio manual.pdf

Size: 1837 KB

Type: PDF, ePub, eBook

Category: Book

Uploaded: 26 May 2019, 20:20 PM

Rating: 4.6/5 from 666 votes.

Download Now!

Please check the box below to proceed.



I'm not a robot



reCAPTCHA
Privacy - Terms

Book Descriptions:

Craig projection alarm clock radio manual

EAAC500

 **ELECTROHOME**

WakeUp™ AM/FM SelfSet™ Projection Clock Radio
with Dual Alarm

Radio-réveil WakeUp™ AM/FM à projection
avec SelfSet™ et double alarme

USER MANUAL
GUIDE DE L'UTILISATEUR



Thank you for your purchase of this Electrohome product. Please read this instruction manual carefully before using product to ensure proper use. Keep this manual in a safe place for future reference.
Merci d'avoir fait l'achat de cet appareil Electrohome. Veuillez lire le présent guide attentivement avant de faire fonctionner l'appareil pour vous assurer de l'utiliser correctement. Conservez le présent guide dans un endroit sûr afin de pouvoir vous y référer au besoin.

www.electrohome.ca

Press Cancel and then WKx. That will turn off the alarm. If you press WKx more than once, it will cycle through small symbols on the bottom of the screen with the number x in front of them. First symbol means it will have a sound alarm for alarm x, second symbol means it will have a radio alarm and the third symbol means it will play the CD to alarm. You set the time for alarm with the slide switch at the back of the unit, selecting WK1 for alarm 1 and WK2 for alarm 2. You can have both alarms active at once, or either one singly. Good Luck and please rate 4 thumbs up for the free answer. Login to post Craig Electronics Inc Can you help me No instruction manual. This was mfg. in 2005. Answer questions, earn points and help others. Look for a number 1 or a number 2 to determine which alarm is on. If you see a number 1, push the 1 button on the top right side of the alarm clock until the number light goes off 1 or 2 times, depending on whether it is set to beep or radio alarm. When the number is not lit up, the alarm is off. Press Cancel and then WKx. That will turn off the alarm. If you press WKx more than once, it will cycle through small symbols on the bottom of the screen with the number x in front of them. First symbol means it will have a sound alarm for alarm x, second symbol means it will have a radio alarm and the third symbol means it will play the CD to alarm. You set the time for alarm with the slide switch at the back of the unit, selecting WK1 for alarm 1 and WK2 for alarm 2. You can have both alarms active at once, or either one singly. Rating the solution is highly appreciated. Please allow time to load large file. Good Luck and please rate 4 thumbs up for the free answer Login to post Could it be an I Craig CMB3227 instead of mcb3227 Craig Electronics Inc Would you please send me a replacement of this manual. My address is A A Messenger, 108 Can you help me Can not reset clock or alarms. Answer

questions, earn points and help others. Please try again. <http://gartenstadt-apotheke.com/userfiles/ford-escape-2001-owners-manual.xml>

- 1.0.

EAAC500

ELECTROHOME

WakeUp™ AM/FM SelfSet™ Projection Clock Radio
with Dual Alarm

Radio-réveil WakeUp™ AM/FM à projection
avec SelfSet™ et double alarme

USER MANUAL
GUIDE DE L'UTILISATEUR



Thank you for your purchase of this Electrohome product. Please read this instruction manual carefully before using product to ensure proper use. Keep this manual in a safe place for future reference.
Merci d'avoir fait l'achat de cet appareil Electrohome. Veuillez lire le présent guide attentivement avant de faire fonctionner l'appareil pour vous assurer de l'utiliser correctement. Conservez le présent guide dans un endroit sûr afin de pouvoir vous y référer au besoin.

www.electrohome.ca

Please try again. In order to navigate out of this carousel please use your heading shortcut key to navigate to the next or previous heading. In order to navigate out of this carousel please use your heading shortcut key to navigate to the next or previous heading. Register a free business account Full content visible, double tap to read brief content. Please try your search again later. To calculate the overall star rating and percentage breakdown by star, we don't use a simple average. Instead, our system considers things like how recent a review is and if the reviewer bought the item on Amazon. It also analyzes reviews to verify trustworthiness. Please try again later. Brad D. 4.0 out of 5 stars I have 2 issues when we stay. First, I can't read my watch with my glasses off and second, I need a thermometer to set the correct temperature for sleeping. So I've been looking for a small inexpensive projection clock with a thermometer for travel. This fits the bill perfectly. The projection arm is adjustable and it has a focus bezel, so you can adjust where it projects. The red numbers are large and legible. The temperature is indoor only, but that's exactly what I was looking for. It plugs to AC and holds 3 AA batteries as backup or to maintain memory while traveling. When we are not traveling, I have it on my nightstand for the projected time only. I continue to use my nicer home alarm clock to wake me up daily. Is this a Bose quality alarm clock and would I use it as my primary alarm clock. ABSOLUTELY NOT! But if you are looking for an inexpensive clock to project with an indoor thermometer for home or travel, I recommend it. Just remember, as inexpensive as it is, it can't do everything well. Here's my rating of its features 1. Projection Clock Bright and easy to read. Strangely enough though, the projection clock is a separate clock, so you have to set it after setting the face clock. Tap the snooze button and the backlight comes on for several

seconds. <http://www.ermak-center.ru/userfiles/ford-escape-2001-manual-transmission.xml>

EAAC500

ELECTROHOME

WakeUp™ AM/FM SelfSet™ Projection Clock Radio
with Dual Alarm

Radio-réveil WakeUp™ AM/FM à projection
avec SelfSet™ et double alarme

USER MANUAL
GUIDE DE L'UTILISATEUR



Thank you for your purchase of this Electrohome product. Please read this instruction manual carefully before using product to ensure proper use. Keep this manual in a safe place for future reference.
Merci d'avoir fait l'achat de cet appareil Electrohome. Veuillez lire le présent guide attentivement avant de faire fonctionner l'appareil pour vous assurer de l'utiliser correctement. Conservez le présent guide dans un endroit sûr afin de pouvoir vous y référer au besoin.

www.electrohome.ca

About 1 degree different another I compared it to. 5. It also has two additional gimmiky features Birthday Reminder and Countdown Timer. On a humorous end, the directions are in English, but they were written by someone whose first language is not English. Many misspelled words and oddly phrased sentences. Im writing this on Saturday morning at 615 am because were up. My son has this alarm, you cant turn off the alarm temporarily, it has to be left on always, or shut off always. I cant explain it but unlike other alarms that have an on off button, this is either programmed to on, or programmed to off. So if you forget, it comes on everyday. It is made in China, and the one I received had two serious problems When I am looking at the face of the clock and turn on the projection feature, it projects the numbers on the ceiling UPSIDE DOWN. Meaning the mechanism was installed upside down. Second, the number 7 projected on the ceiling looks like a 1 and you wont know what time it is in the dark if you look at the projection. Finally, the included instructions are faulty. It may be a cheap price, but you get what you pay for. Pay a little more and get some other brand that you can actually use. You have to program 2 different clocks and that to me make no sense. I would not buy again. Much easier projection clocks out there. This clock does exactly that. You can leave the time projection on all the time. I dont trust Craig brand but at this price I am hoping for it to last a couple years. I think people are confused about the projection being upside down. With the unit facing forward towards the foot of the bed the projection is perfectly readable from sleeping position. Apparently the LCD screen is not meant to be facing you if you are using the projection. Read and save the directions because it is a bit confusing to set the date and time, especially since you have to set it for LCD and projection clocks separately.

It is not the easiest thing to program for people like me who dont like to read manuals but I love it. I only wanted the projection so I did not have to fumble for my cell phone every time I wake up. I liked

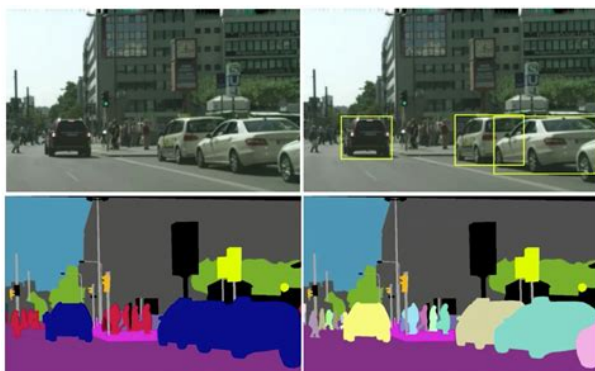
it so much I bought 5 one for every member of my family. My sister went out and bought for her family after staying one night at my house. In order to navigate out of this carousel please use your heading shortcut key to navigate to the next or previous heading.



<https://ayurvedia.ch/boss-me-20b-bass-manual>

Craig Folding Travel Alarm Clock Instructions Craig Cr45372 Dual Alarm Clock With Digital Pll Fm Radio In Black Craig Am Fm Stereo Dual Alarm Clock Radio With Cd Player And Led Craig Projection Alarm Clock Radio Manual Craig Cr45372 Dual Alarm Clock With Digital Pll Fm Radio In Black Solved I Cant Set Clock On Craig Cr41470a Fixya Instructions On How To Set Your Travelon Travel Alarm Clock Style Need Instructions For Craig Clock Cc3005 Fixya Craig Am Fm Stereo Dual Alarm Clock Radio With Cd Player And Led Westclox Brown Woodgrain Led Alarm Clock 22690id The Home Depot Craig Cm427 3 Piece Vertical Cd Stereo Shelf System With Am Fm Craig Cr45372 Dual Alarm Clock With Digital Pll Fm Radio In Black Jensen Am Fm Alarm Clock Radio Jcr 175 The Home Depot Craig Cr45372 Dual Alarm Clock With Digital Pll Fm Radio In Black Craig Am Fm Stereo Dual Alarm Clock Radio With Cd Player And Led Craig Clp281x Manualzz Craig Wright S Eal Dismissed Lawsuit Against Hodlonaut To Hama Nostalgia Mini Alarm Clock Black Fat Llama Craig Hospital Brain Injury Handbook By Issuu Westclox Black Super Loud Alarm Led Clock 70044a The Home Westclox Brown Woodgrain Led Alarm Clock 22690id The Home Depot Craig Cm427 3 Piece Vertical Cd Stereo Shelf System With Am Fm Cartoon Network Craig Of The Creek Season 1 Dvd Movies Meijer Jensen Am Fm Alarm Clock Radio Jcr 175 The Home Depot Jensen Am Fm Alarm Clock Radio Jcr 175 The Home Depot Jensen am fm alarm clock radio jcr 175 the home depot jensen am fm alarm clock radio jcr 175 the home depot hama nostalgia mini alarm clock black fat llama craig hospital brain injury handbook by issuu westclox black super loud alarm led clock 70044a the home solved i cant set clock on craig cr41470a fixya. Sony news in your inbox. Download our apps.

<http://oxadreamland.com/images/colorado-cdl-license-manual.pdf>



Support Support Self Support Contact Support Community Register a Product Sign In Favorites
Sony Rewards Electronics Registration Electronics Community Favorites Favorites Search Sony
Sony Sites Search Sony To get the full experience on Sony.com, please change your settings to allow
JavaScript. Unplug the clock radio from the AC power for 30 seconds. Plug the clock radio back in to
the AC power. Reinstall the backup batteries, if the clock radio uses these. Set the time on the clock
radio. Refer to the supplied manual for this or other model specific features. If you have completed all
of the steps and the issue is not resolved, service may be required. Go to Product Repair. The clock
radio gains or loses time. We recommend downloading and installing the latest version of one of the
following browsers Our site is not optimized for your current browser. A newer version of your
browser may be available Chrome Chrome Download the latest version IE Internet Explorer
Download the latest version Firefox Firefox Download the latest version Apple Safari Download the
latest version Proceed with current browser for now Proceed with current browser for now. For
consumers in Canada, please make Your unit will be repaired, replaced or if the unit can not
be Miami, FL 33169. This device complies with Part 15 of the FCC Rules. Operation is subject to the
following two Changes or modifications not expressly approved by the This warranty is void if the
product has been a Used in a commercial application or Note This warranty does not cover a
Ordinary adjustments as outlined in the Owner's Manual which can be performed by the
customer. This warranty is not transferable and only applies to the original purchase. Any
implied Owners Manual. Under no circumstance shall Craig be liable for any loss or consequential
damage arising This warranty gives specific legal rights.

<http://oeztuerk-velbert.com/images/colorado-cdl-manual-2015.pdf>



However, you may Some states do not allow limitations Therefore, these restrictions To Obtain Service
on your Product Install the batteries as follows Fig. 1 Battery may explode or leak. Keep new and used
batteries away from children. If the battery compartment does not close If you think batteries might
have been swallowed or placed inside any part of the body, seek The correspondent indicator will
illuminate or appear on the LED Display with your Playback Mode Radio AM Band. BT Bluetooth AUX

in. Indicators. CD Indicator will illuminate. FM Indicator will illuminate. AM Indicator will illuminate. AUX Indicator will illuminate. Remote Control approximate 1 second to turn the unit to standby mode. The speaker will disconnect automatically. Button on the Remote Control to enter to time set mode. Time on display will blink. Button on the Remote Control to save the settings, time on display will stop blinking. Alarm 1 setting. The display will resume to actual. Press the ALARM 1 Button once to activate the alarm function and set the wake up mode. Press the ALARM 1 Button twice to activate the alarm function and set the wake up mode. Press the ALARM 1 Button three times to activate the alarm function and set the wake up mode. Press the ALARM 1 Button four times to activate the alarm function and set the wake up mode. Press the ALARM 1 Button five times to turn off alarm. AL 1 Indicator will not light. Buttons on the unit or the. Remote Control to skip tracks. SD Card Playback Alarm 2 setting. Same as Alarm 1 settings. But, press the ALARM 2 Button instead of ALARM 1 Button. Important Notes. Make sure the. Otherwise, when Alarm goes off, no sound output from the. Shut off alarm. To turn off alarm completely alarm will not. Snooze Sleep Timer. In the power on mode, press the SLEEP Button to activate the sleep function, SLEEP time will. Button to power off the unit. BT Bluetooth.

The first time you use the unit or pair it to a new Bluetooth Device, pair it as follows. Start pairing following. After pairing, the "bt" on the display. Buttons on the. Remote Control to skip tracks. Notes. Normal operation after pairing. USB Playback. MP3 files in the USB Device automatically. Button on the Remote Control twice. The REP Indicator will stop blinking. Button on the Remote Control three times. The REP Indicator will turn off. Programmed Playback. Button on the Remote Control, "01" will appear on the display. Buttons on the unit or. Button on the Remote Control. Control again to store the selected track into the memory. The PROG Indicator will illuminate. The PROG Indicator will turn off. MP3 files in the SD Card automatically. Button on the unit or Remote Control to pause. Press again to resume normal. Buttons on the unit or the. Buttons on the. Remote Control to skip tracks. AUX in. To listen the music from the external audio device such as MP3 Player; Discman; iPods. etc. Insert the other end to the Phones. Jack; Line Out Jack or AUX Out Jack on the external audio device. Notes. Never insert violently to avoid damaging the USB Device; SD Card or the unit. If it doesn't. Radio AM or FM Indicators will illuminate. Buttons on the unit or. Radio stations presetting. Place a CD disc on the center spindle, Then press the. Button on the unit or Remote Control to start playback. Repeat Playback. During CD playback. Button on the remote control once to play. The REP Indicator will illuminate and blink. No sound or. Sound distortion. BT not. Volume of the unit was set to. Button on the unit or press the. Volume level too high. Reduce the volume level by press the. Reduce the volume level of the. Volume level of the connected. The external BT Device had NOT paired. The external BT device too far from the. Clock Back Up. Audio Power. Impedance of Speakers. Radio Band Coverage. BT version. BT Operation Distance.

<https://www.geosuiteonline.de/wp-content/plugins/formcraft/file-upload/server/content/files/162870c213a3e8---cadillac-service-manual-free-download.pdf>

Pair the external BT Device to the unit as. Place the external BT device close to. AM 520 1710 KHz. FM 87.5 108 MHz. PDF Version 1.5. Linearized No. Creator Tool Adobe Illustrator CS6 Macintosh. Thumbnail Width 256. Thumbnail Height 200. Thumbnail Format JPEG. Thumbnail Image Binary data 26207 bytes, use b option to extract. Producer Adobe PDF library 10.01. Creator Lok. Document ID xmp.didEEAA140C192068118C14B99BFFA4B321. Instance ID uuid45b8a6cf281f5349ab396c2225d295f2. Original Document ID uuid5fb420b43e7f914c91c7f5a8523aced8. Rendition Class proofpdf. Derived From Instance ID xmp.iidEEAA140C192068118C14B99BFFA4B321. Derived From Document ID xmp.didEEAA140C192068118C14B99BFFA4B321. Derived From Original Document ID uuid5fb420b43e7f914c91c7f5a8523aced8. Derived From Rendition Class default. History Action saved, saved. History Instance ID xmp.iidF97F11740720681197A5B457D84DF78A,

xmp.iidEFAA140C192068118C14B99BFFA4B321. History Software Agent Adobe Illustrator CS4, Adobe Illustrator CS6 Macintosh. N Pages 1. Has Visible Transparency False. Has Visible Overprint True. Max Page Size W 622.300000. Max Page Size H 233.680138. Max Page Size Unit Millimeters. Font Name TimesRoman, ArialBoldMT, HelveticaBlack, MyriadProRegular, NuevaStdRegular, NuevaStdBoldItalic, Helvetica, TimesNewRomanPS, HelveticaBoldOblique, HelveticaBold, TimesNewRomanPSBold, ArialNarrow, ArialNarrowBold, KozGoProRegular, ArialMT, TimesNewRomanPSMT. Font Family Times, Arial, Helvetica, Myriad Pro, Nueva Std, Nueva Std, Helvetica, Times New Roman PS, Helvetica, Helvetica, Times New Roman PS, Arial Narrow, Arial Narrow, Pro, Arial, Times New Roman. Font Face Regular, Bold, Black, Regular, Regular, Bold Italic, Regular, Roman, Bold Oblique, Bold, Bold, Regular, Bold, R, Regular, Regular. Font Type TrueType, Open Type, Type 1, Open Type, Open Type, Open Type, TrueType, Type 1, TrueType, TrueType, Type 1, Open Type, Open Type, Open Type, Open Type, Open Type.

BACSIHA.COM/public/ckfinder/userfiles/files/case-580c-manual-pdf

Font Composite False, False, False, False, False, False, False, False, False, False, False, False, False, False, False, False. Plate Names Magenta, Black. Swatch Groups Group Name Default Swatch Group. Swatch Groups Group Type 0. Swatch Groups Colorants Swatch Name New Color Swatch 8. Swatch Groups Colorants Type PROCESS. Swatch Groups Colorants Tint 100.000000. Swatch Groups Colorants Mode CMYK. Swatch Groups Colorants Cyan 0.000000. Swatch Groups Colorants Magenta 0.000000. Swatch Groups Colorants Yellow 0.000000. Swatch Groups Colorants Black 100.000000. Page Count 2. Author Lok.

<https://skazkina.com/ru/boss-me-20b-bass-manual-0>